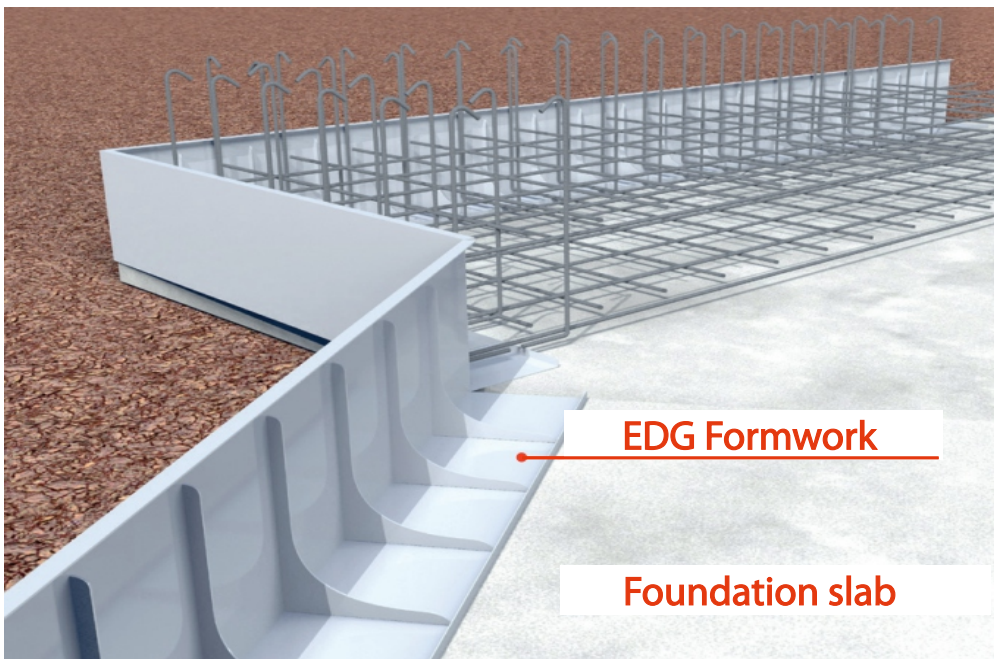
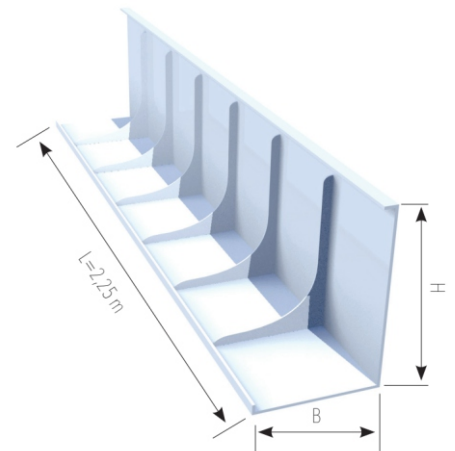


Product description

Extrea EDG is a permanent formwork made of metal sheet.

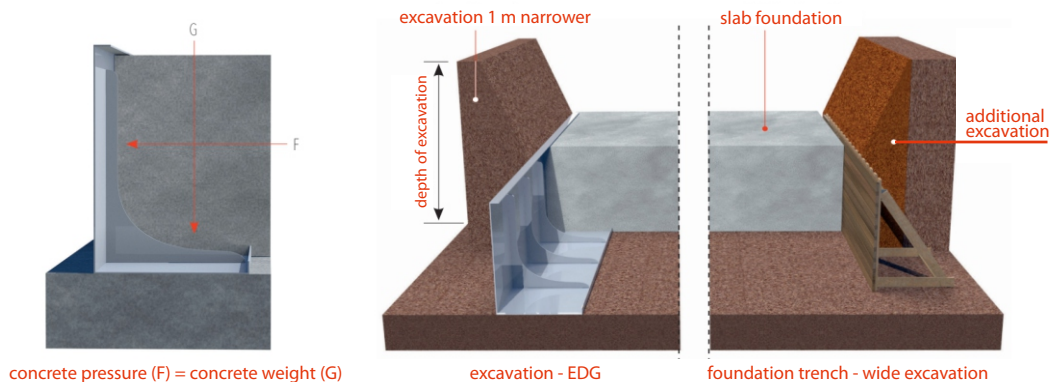
Application

- ➔ Strip foundation
- ➔ Foundation slab

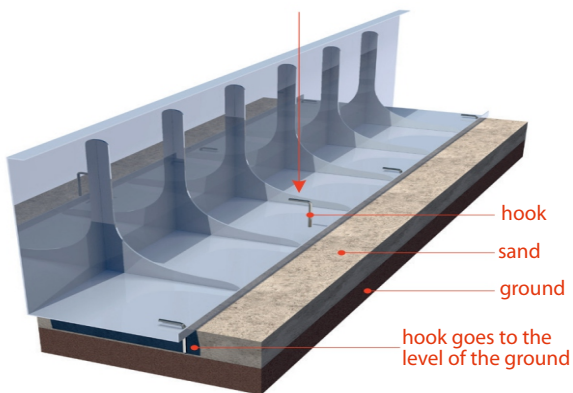


Advantages

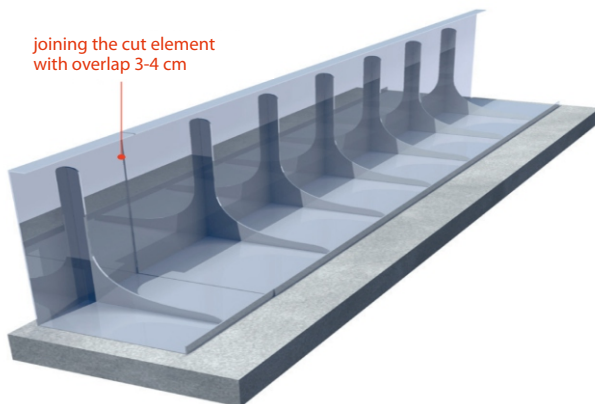
- ➔ EDG is self-supporting, doesn't required additional support.
- ➔ Fast and easy installation.
- ➔ Saving on smaller excavation.
(using EDG formwork excavation for foundation can be narrower by around 1m)
- ➔ Light construction.



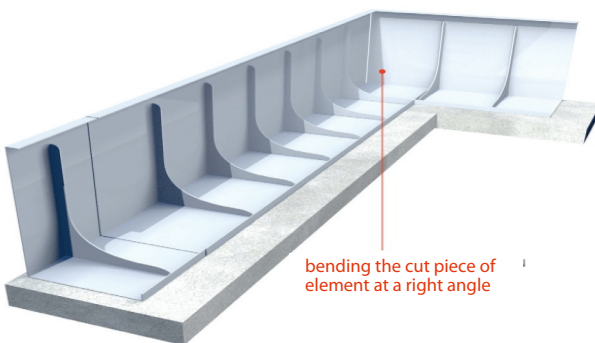
Installation instructions



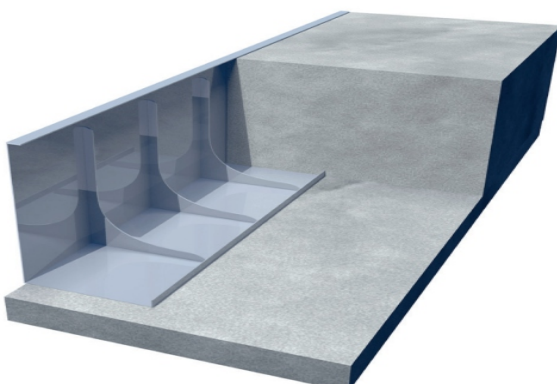
- Installation of EDG on the ground (if EDG is being installed on bedding concrete we have to use nails instead of hooks).



- Connecting of EDG (joining the cut element with overlap of 3 - 4 cm).



- Cutting the mounting foot and top of element at the corner. Bending the cut metal sheet.



- Concreting of foundation slab/combined footing.

Product range

Art. no.	Type	Height H [cm]	Width B [cm]	Amount of ribs
506146	EDG 14/6	14	12	6
506147	EDG 14/7	14	12	7
506148	EDG 14/8	14	12	8
506186	EDG 18/6	18	12	6
506187	EDG 18/7	18	12	7
506188	EDG 18/8	18	12	8
506206	EDG 20/6	20	12	6
506207	EDG 20/7	20	12	7
506208	EDG 20/8	20	12	8
506226	EDG 22/6	22	13	6
506227	EDG 22/7	22	13	7
506228	EDG 22/8	22	13	8
506246	EDG 24/6	24	14	6
506247	EDG 24/7	24	14	7
506248	EDG 24/8	24	14	8
506256	EDG 25/6	25	15	6
506257	EDG 25/7	25	15	7
506258	EDG 25/8	25	15	8
506307	EDG 30/7	30	18	7
506308	EDG 30/8	30	18	8
506309	EDG 30/9	30	18	9
506357	EDG 35/7	35	21	7
506358	EDG 35/8	35	21	8
506359	EDG 35/9	35	21	9
506408	EDG 40/8	40	24	8
506409	EDG 40/9	40	24	9
506400	EDG 40/10	40	24	10
506401	EDG 40/11	40	24	11
506459	EDG 45/9	45	27	9
506450	EDG 45/10	45	27	10
506451	EDG 45/11	45	27	11
506509	EDG 50/9	50	30	9
506500	EDG 50/10	50	30	10
506501	EDG 50/11	50	30	11
506600	EDG 60/10	60	36	10

- All elements are 2,25 m long
- Sheet thickness: formwork - 0,7 mm; ribs - 0,7 mm (for EDG up to 30 cm high), ribs - 1,2mm (for EDG over 30 cm high)
- Possibility of manufacturing EDG formwork in any given dimension required by the projects.

Health and safety warnings and recommendations

During the installation observe the compulsory security standards - wear protective gloves and work clothes with long sleeves. During transport and storage, protect against mechanical damage.